



Photopolymer Dry Film Laminator



PART NOS.:
27-22800 -12"
27-22802 -24"
LAMINATORS



Mega Electronics Limited

Mega House,
Grip Industrial Estate,
Linton, Cambridge.
England. CB21 4XN
Tel: +44 1223 893900
Fax: +44 1223 893894
email: sales@megauk.com
Web: www.megauk.com

User's Guide

Photopolymer Dry Film Laminator

The Photopolymer dry film laminators are simple and efficient units for laminating all types of polymer film resists to the clean surface of copper laminates and chemically milled components. The laminator uses accurate controlled temperature and feed to laminate the dry film resist to the metal surface as well as removing the Polyofin separator sheet.

Two Models available either **27-22800** (350 mm) or **27-22802** (650 mm).

EASY – TO – USE

- ❖ Exclusive pre-set temperature and speed setting Programs for a variety of applications just by pressing a button on the digital display panel
- ❖ Adjustable override controls for both temperature and speed to compensate for variations in material or conditions
- ❖ Heater roller and pressure roller construction in Silicon rubber, allows roller gap adjustment ensuring correct pressure for panels up to 4mm thick
- ❖ Measure function button displays actual roller temperature during operation.
- ❖ Instant switch from Centigrade to Fahrenheit
- ❖ Warm-up time only 10 minutes due to The Infrared heater design which gives better heat distribution and control
- ❖ Ready and wait visual and audible signals alert operator to laminator readiness, thus reducing errors
- ❖ 8 Bit microprocessor digital heat Controller permits precise setting and guarantees fast response times
- ❖ Reverse function button allows easy film clear from the machine.
- ❖ Function to allow cold laminating

MAXIMUM WORKING WIDTH

27-22800 Film width 305 mm (12") Film Support Tube 310 mm (12¼")

27-22802 Film width 620 mm (24") Film Support Tube 620 mm (24½")

TEMPERATURE RANGE	0 – 160 degrees Centigrade
LAMINATION SPEEDS	0 – 1.6 metres/minute variable in 10 stages
POWER REQUIREMENTS	220/240 Volts 50/60 Hz single phase 27-22800 6.0A Consumption: 1400 watts 27-22802 7.8A Consumption: 1800 watts
SHIPPING DIMENSIONS	27-22800 MODEL 670 mm (W) x 500 mm (H) x 690 mm(L) 27-22802 MODEL 670 mm (W) x 500 mm (H) x 1010mm(L)
SHIPPING WEIGHT	27-22800 MODEL 35 kilos 27-22802 MODEL 49 kilos

PHOTOPOLYMER DRY FILM LAMINATOR OPERATING INSTRUCTIONS

WORK ROOM LIGHTING

Room lighting is most important and Philips TL 65 W 16 strip-lights are suitable for room lighting as their spectrum has no effect on most photoresists. Windows should be covered with non – bleaching yellow foil which cuts out light wavelengths under 450 nm., yellow foil can be obtained from the Kodak company and Plexiglas type " YELLOW 303 " is equally suitable. Processing should be carried out under dust free conditions, the laminated and exposed parts must also be stored in yellow light until used.

THE LAMINATOR

The laminator uses two rolls of Photo-resist, and only two rolls of the same width can be used up to 305 mm in width for the **MODEL 305** and 610 mm for the **MODEL 610**. The dry film photo emulsion is sandwiched between a polyester cover sheet and a peelable Polyofin sheet. The laminator removes the Polyofin cover sheet before the film contacts the heated rollers; these rollers then fuse with heat and pressure the photo emulsion on to the material both sides. On exit the rear cold pressure rollers continue to roll and fix the photo emulsion onto the material.

FILM LOADING AND THREADING

WHEN FILM LOADING USE IN CONJUNCTION WITH THE FILM THREADING DIAGRAM (page 8 & 9).

TOP LOADING AND THREADING

1. Remove the feed table and raise the safety guard.
2. Remove the top Polyofin take up roller shaft.
3. Remove the top film supply roller shaft.
4. Fit one of the spare cardboard tubes between the two core supports of the top Polyofin take up roller shaft.
5. Fit one of the DRY FILM rolls between the two core supports of the top supply roller shaft.
6. Replace the top supply roller shaft with roll of film onto the machine, the round bearing end fits in the side with the steel spring clip first and the hexagon end fits into the hexagon film tension socket. Ensure the film roll is loaded the correct way, film dropping off the back of the roll.
7. Replace the top Polyofin take up roller shaft.
8. Adjust the lateral position of both dry film roll and cardboard tube to align with each other.
9. Remove the end of the top Polyofin film and thread up the top section as per the threading diagram on page 8 and stick the edge of the Polyofin film to the top take up roller tube with masking tape across the tube width. If however the film is sticking when running laminator, re-thread as per diagram on page 9
10. Roll both rolls together to allow excess film to feed behind the guard and below the centre line of the two heat rollers.

BOTTOM LOADING AND THREADING

1. Remove the bottom Polyofin take up roller shaft.
2. Remove the bottom film supply roller shaft.
3. Fit the other spare cardboard tube between the two core supports of the bottom Polyofin take up roller shaft.
4. Fit the second roll of DRY FILM between the two core supports of the bottom supply roller shaft.
5. Replace the bottom supply roller shaft with roll of film onto the machine, the round bearing end fits in the side with the steel spring clip first and the hexagon end fits into the hexagon film tension socket. Ensure the film roll is loaded the correct way, film dropping off the front of the roll.
6. Replace the bottom Polyofin take up roller shaft.
7. Adjust the lateral position of the bottom DRY FILM roll to align with the top DRY FILM roll, measure if necessary from the side plate to the side of each roll to ensure accurate alignment. If these rolls are miss-aligned then a build up of emulsion from the dry film will be come attached to the silicon front heat and rear pressure rollers causing problems.
8. Adjust the lateral position of the bottom Polyofin cardboard tube to align with the dry film roll.
9. Remove the end of the bottom Polyofin film and tread up the bottom section as per the threading diagram, the bottom guide roller can be easily pulled forward via the curved slots to allow easy threading. Stick the edge of the Polyofin film to the bottom take up roller tube with masking tape across the tube width.
10. Roll both rolls together to allow excess film to feed upwards above the heat rolls and feed up behind the safety guard and back over so to remain in position.
11. Lift the pressure release lever on the right side of the laminator until vertical, this separates the rollers, then feed a scrap piece of board between the rollers forcing both films through the rollers.
12. Lower the pressure release lever and secure in working position. (This position is adjustable for different thickness of panels giving increase roller pressure the lower the handle).
13. Lower the safety guard. (the guard has two switch interlocks both ends which inhibit the motor rotation)
14. Switch the machine on with the **ON/OFF** rocker switch at the rear of the laminator adjacent to the mains input cable entry, the temperature defaults to zero degrees centigrade, adjust the motor speed on the front panel to No 4 and switch the motor on with " **RUN**", allow to feed so that the scrap card exits fully from the rear of the laminator and then stop the motor with " **STOP**". If during this operation film jam problems occur then the "**REVERSE**" button can be pressed to eject the film and allow this operation to be repeated.
15. Re-position the bottom guide roller via the curved slots to the top running position.
16. Run off about 1 metre of film to allow creases and misalignment to correct.
17. If both films entry point into the heat rollers are aligned then the laminator is filmed, if not check the positions of both dry film rolls from the end plates and re-adjust if necessary. Replace the machine table and align the work feed stop to within 5 mm of the inside edge of the dry film.

The laminator is now threaded with film and ready to run, it is advisable to check with the manufacturer the recommended laminating temperature of the dry film, the feed speed and the exit temperature required. As with some Dry Films the peelable POLYOFIN sheet can have a low melting temperature. The guide roller adjacent to the machine guard which is situated above the top heat roller can get hot. When the machine is switched off this POLYOFIN film can stick to the cooling guide roller. When next the machine is switched on and the drive motor activated this POLYOFIN film can break, if this happens then use the alternative treading diagram on page 5.

MACHINE OPERATION

The machine is very simple to use after threading. Switch the laminator on with the rear rocker mains switch, the laminator defaults to room temperature setting, motor off and degrees Centigrade. Refer to the film temperature and feed rate speed specification from the dry film data sheet, select one of the four pre-set programs "38" "75" "125" "250" on the front panel, the temperature setting can be modified by using the up and down temperature arrowhead keys to select the required temperature recommended by the Dry Film Manufacturer, similarly using the up and down arrowhead keys select the required film feed speed.

The laminator now will start to heat up to the set temperature and this takes about 10 – 12 minutes dependant on the temperature selected, up to a maximum high of 160 degrees centigrade. When the temperature of the heat rollers reach 5 degrees lower than the selected temperature the "READY" sign will be displayed on the front panel, and when the temperature rises 5 degrees above the set temperature the "READY" sign will flash. This over shoot will happen on initial warm up and it is best to leave the laminator a further 3 – 4 minutes to stabilise the temperature before use. At any time the "MEAS" button on the front panel can be pressed to display the actual roller surface temperature of the machine. To laminate the panels now press "RUN" the motor will slowly increase speed to the selected speed number and lamination can commence by feeding the panels against the side fence on the table and into the pinch grip of the front rollers. As soon as the first panel has been through the front heat rollers then introduce the second panel so as not to waste dry film and continue until all panels have been laminated, as the panels exit they can be stacked in a zigzag fashion and separated later with a sharp knife, the "STOP" button then switches the motor off. The "FAN" button is used to switch a cooling fan on/off, this is situated between the front heat rollers and the rear pull rollers, it is only operated when the exit temperature of the laminated panels is above the recommended exit temperature of the Dry Film manufacturers specification, usually needed when laminating metal plates which can retain heat longer than printed circuit boards.

If the machine is left switched on with a high temperature selected and without running for 90 minutes then the microprocessor will shut the temperature down and remain in a standby mode until required for use, the digital display will show "st by", operation of one of the buttons will re-instate the program settings used.

ROLLER PRESSURE SETTINGS

BOTTOM POSITION	Zero to 1/16 th inch thick panels
NEXT UP POSITION	1/16 th inch thick panels to 3/32 nd inch thick panels
NEXT UP POSITION	3/32 nd inch thick panels to 1/8 th inch thick panels
NEXT UP POSITION	Depending on panel thickness and pressure required
NEXT UP POSITION	Depending on panel thickness and pressure required
NEXT UP POSITION	Depending on panel thickness and pressure required

Top position is a park position, so that the rollers do not produce flat spots when not in use, and machine should always be left in this position when you have finished laminating.

SPEED SETTINGS

PROGRAM No	SPEED
9	1.50 metres / min.
8	1.35 metres / min.
7	1.15 metres / min.
6	1.00 metres / min.
5	0.85 metres / min.
4	0.65 metres / min.
3	0.50 metres / min.
2	0.35 metres / min.
1	0.15 metres / min.

The above speeds settings are approximate and 'UNDER' load.

PRE-PROGRAM SETTINGS

The laminator has 4 pre-programmed settings to cover most of the common films used.

PROGRAM No	TEMPERATURE	SPEED No.	SPEED
38	120 degrees Centigrade	8	1.4 metres / min.
75	115 degrees Centigrade	6	1.0 metres / min.
125	110 degrees Centigrade	5	0.9 metres / min.
250	105 degrees Centigrade	3	0.5 metre / Min

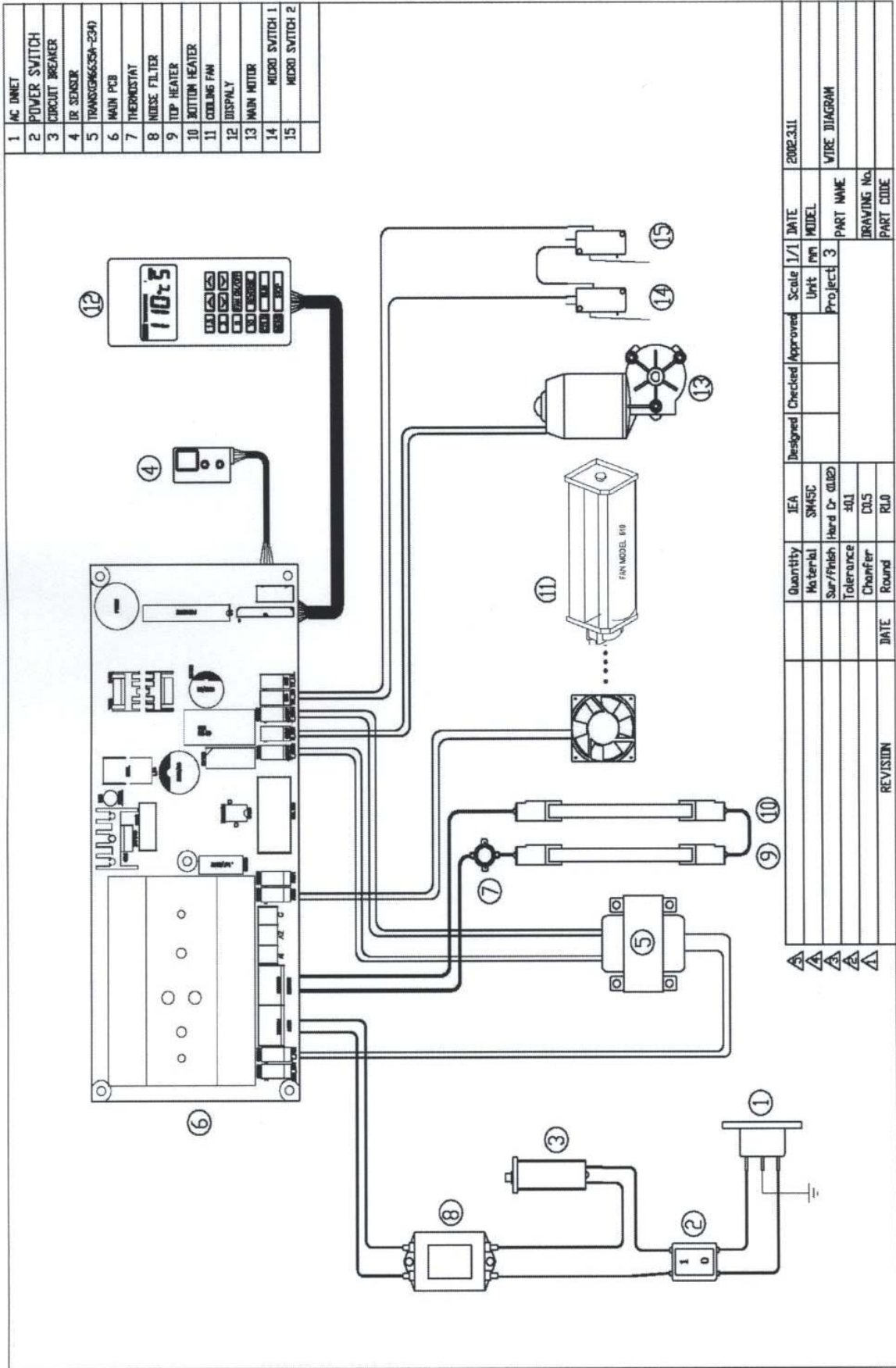
PANEL PREPARATION

Sufficient adhesion, necessary in the subsequent etching and electrolytic processes can only be ensured if the panel material surface is absolutely free of grease and oxides as well as any moisture or traces left by mechanical/chemical cleaning. This cleaning may be carried out by hand or machine with suitable advice from the supplier of DRY FILM.

STORAGE

The waiting periods before panel preparation and lamination should not exceed 60 minutes, otherwise there is a chance that the metal surface may become oxidised and cause loss of adhesion. After laminating, the panels must be allowed to stand at room temperature for 20 minutes before exposure to ensure the cure of the dry film emulsion.

The resists of most manufacturers require that the dry films be stored at a temperature of less than 26 degrees centigrade but preferably between 15 – 20 degrees centigrade and at a relative humidity of 40% - 60 % to ensure full shelf life.



1	AC INLET
2	POWER SWITCH
3	CIRCUIT BREAKER
4	IR SENSOR
5	TRANSFORMER (250V-25A)
6	MAIN PCB
7	THERMOSTAT
8	MOUSE FILTER
9	TOP HEATER
10	BOTTOM HEATER
11	COOLING FAN
12	DISPLAY
13	MAIN MOTOR
14	MICRO SWITCH 1
15	MICRO SWITCH 2

Quantity	IEA	Designed	Checked	Approved	Scale	1/1	DATE	2002.3.11
Material	SM45C				Unit	mm	MODEL	
Sur/finish	Hard Cr (0.02)				Project	3	PART NAME	WIRE DIAGRAM
Tolerance	±0.1						DRAWING No.	
Checker	CLS						PART CODE	
Round	RLJ							
DATE								
REVISION								

- △
- △
- △
- △
- △

