

Instructions for use

JetStar Inkjet Artwork Film

JetStar Standard - Dye Based Ink

JetStar Premium – Dye or Pigment Based Ink

100-070	Standard A4 10 sheet pack
100-071	Standard A4 100 sheet pack
100-072	Standard A3 10 sheet pack
100-073	Standard A3 100 sheet pack
100-075	Premium A4 10 sheet pack
100-076	Premium A4 100 sheet pack
100-077	Premium A3 10 sheet pack
100-078	Premium A3 100 sheet pack

1. Prepare artwork for output.

Remember, the quality of your digital artwork will determine the quality of your positive. Artwork should have smooth lines and edges and be of adequate resolution. A minimum of 600 dpi is recommended (1200 dpi is ideal for line art).

2. Load the film into the printer. It is important to load the printer so that the coated side of the film will be face-up under the print head. Most printers require the film to be loaded coated side down in the printer tray. As the film is fed through the printer, the coated side will face upward to receive the ink. If your printer loads from the back or if you are using rolls, the film should be loaded with the coated side facing up. To assist in determining the proper print side, the coated print side of the JetStar film has a milky, matte appearance, and to determine the print side with the Premium InkJet Artwork Film, you will have to slightly wet your finger tip and the print side will be slightly sticky.

3. Check printer settings. Make sure printer is set for the highest resolution and print quality, with High Speed Setting OFF. Note that the higher the resolution, the slower the print. Next, set the Media Setting to Matte, Heavyweight Matte, Archival Matte or Inkjet Backlight Film. For Epson Ink Jet Printers, set the Brightness control slider to +25 and always print in Black Ink only or Greyscale. Options will vary based on printer and software available. Then, set ink deposit for optimum results.

TIP: Experiment with the setting options available with your printer to determine the best set-up for your requirements. If positive seems light or lacks density, try

increasing the print quality or amount of ink deposit.

4. Print. JetStar films dry quickly. With most inks, the positive will be dry and ready for use in less than 2 minutes. Drying times will vary based on printers, inks and conditions. Note: Always make sure positive is completely dry before using. Transfer or marring of image can occur if used before completely dry. Use of dye-based inks is recommended.

PLEASE NOTE:

JetStar Standard is designed to work with standard inkjet printers using dye-based inks, and JetStar Premium can also be used with pigment based inks. Results will vary based on printer used, type of ink, software and artwork quality. Generally, printers with higher resolution capability will yield better looking positives. But remember, image quality depends the most on having quality artwork with adequate resolution and smooth line edges. As with any digital media, experimentation is necessary to determine the proper equipment settings to achieve desired results.

See reverse for Canon Printer instructions which are available from Mega with free pack of film.



Mega Electronics Limited.,
Mega House, Grip Industrial Estate,
Linton, Cambridge, England. CB21 4XN
Telephone: +44 (0) 1223 893900
Fax No: +44 (0) 1223 893894
email: sales@meguk.com
web: www.megauk.com

Jetstar Premium settings for Canon Pixma A4 & A3 inkjet printers

Go into printer properties and the screen below will appear. Set all settings as below and then click on the

Set button and the second screen will be displayed. Here set the intensity to maximum dark.

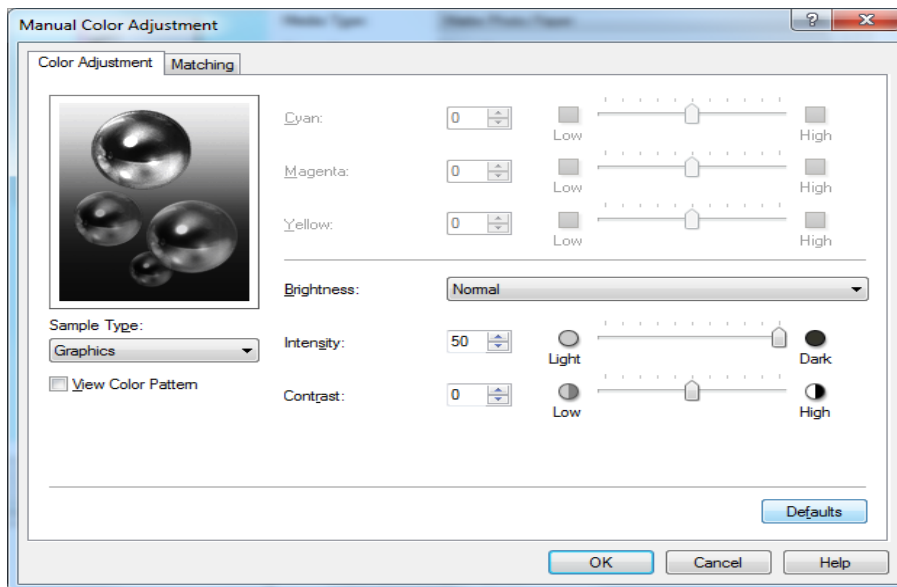
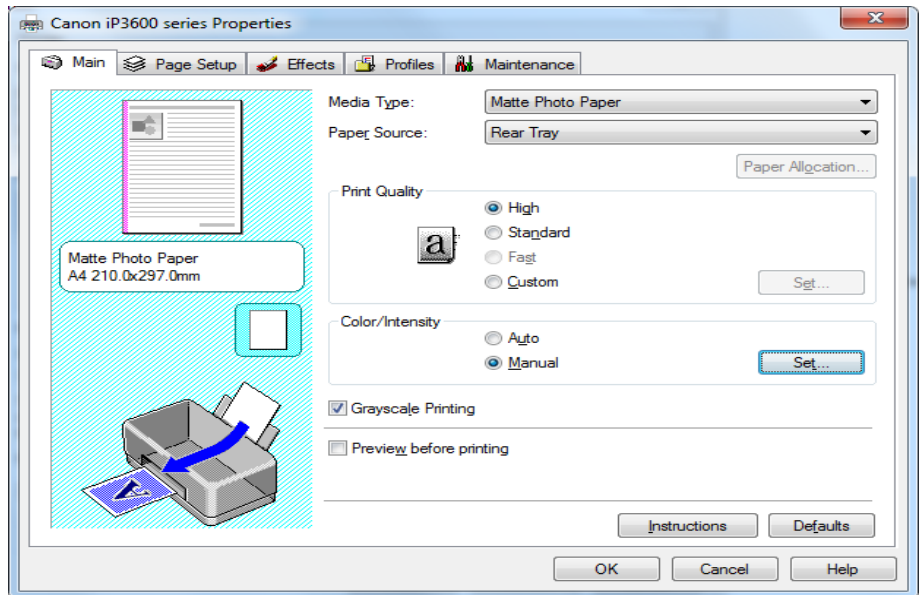
Click OK to accept which will take you back to the first screen. Click OK again and you are ready to print.

If you wish to save these settings Click on profiles in the first screen then add profile and give it a name for example artworks and then click OK.

Next time you are printing an artwork click on profiles and then select artworks and click OK which will take you back to the first screen and then Ok again. This is for A4 printer. For A3 printer – to save settings, Click on Quick Set-up and then save. Type in name (eg: Artworks) and then Click OK.

When you next go to printing preferences the Quick Set-up screen will be displayed. Under commonly used Settings select Artworks and OK.

You are then ready to print. **NB.** As these printer drivers do not allow you to mirror please ensure this is done in the program you are using so that your emulsion side is always in contact with the material to be exposed and right reading.



Mega Part No: 58-5301-1	A4 PRINTER including	JetStar Premium A4 10 sheet pack	£80.00
Mega Part No: 58-5302-1	A3 PRINTER including	JetStar Premium A3 10 sheet pack	£195.00

All prices exclude Carriage and VAT