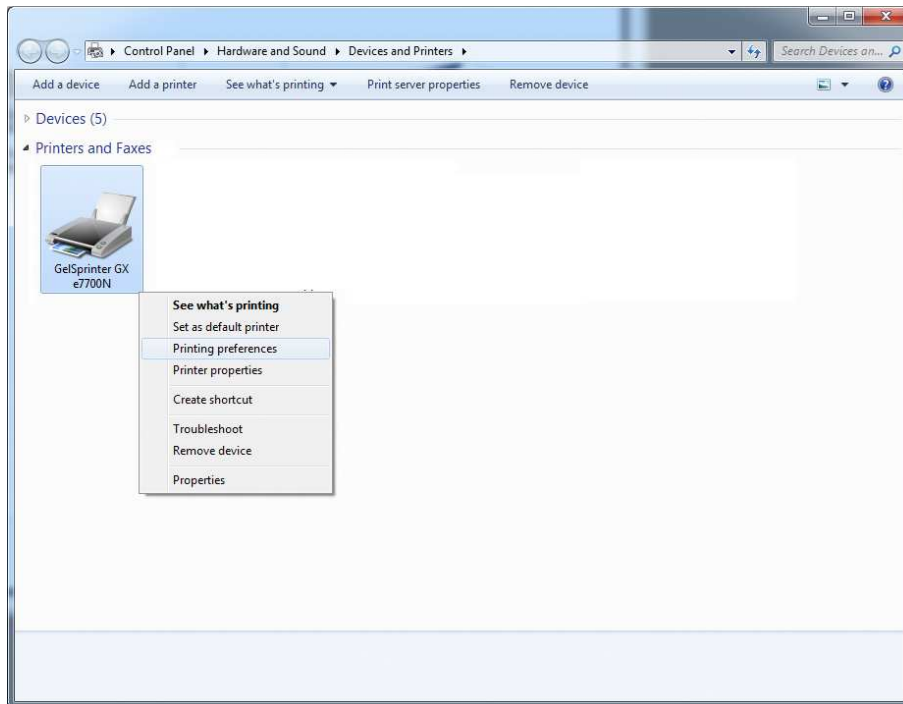
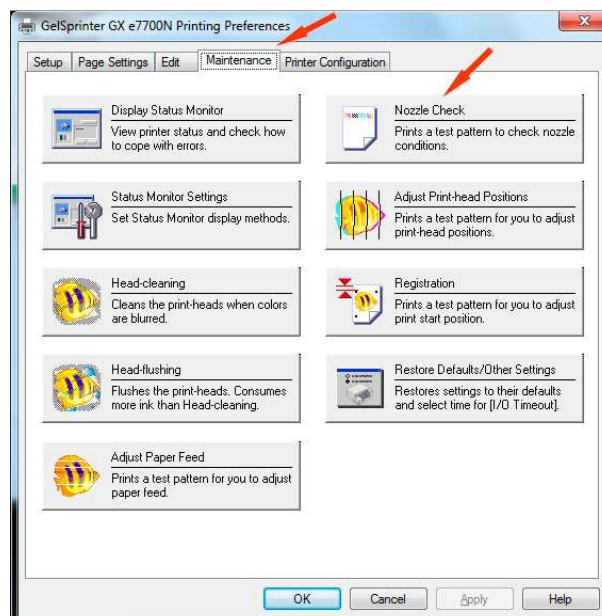


Nozzle Check Procedure for Ricoh Printer

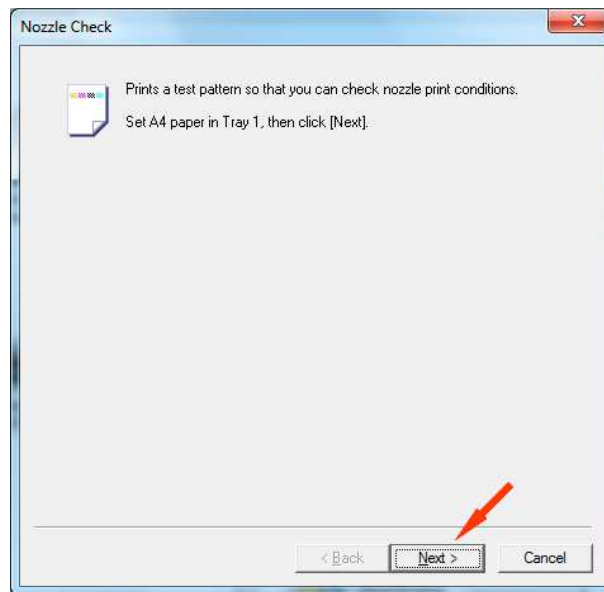
1. Open **'Devices & Printers'**:
Start -> Control Panel -> Devices & Printers
2. Open the GelSprinter **'Printing Preferences'** window: Right click the icon **'GelSprinter XXXXX'** and select **'Printing Preferences'**.



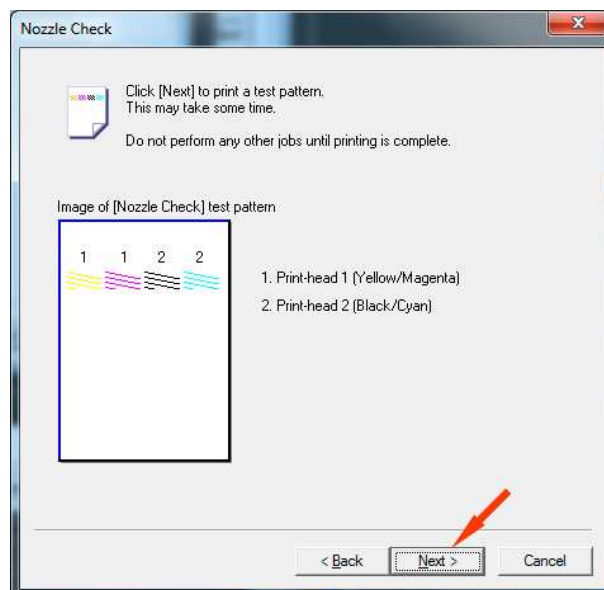
3. Select the **'Maintenance'** tab and click **'Nozzle Check'**.



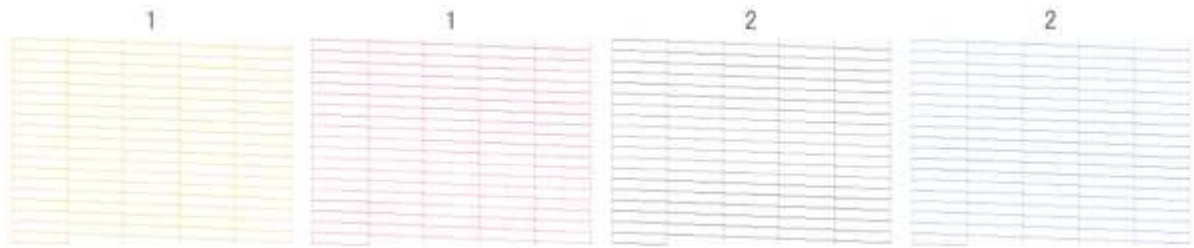
4. Ensure that you have paper in the printer and click **'Next'**.



5. Click **'Next'** and the nozzle check will be printed.



A complete nozzle check should be identical to the image below with no breaks in the lines.



If the nozzle check is not complete the print heads will require cleaning. This function is performed from the maintenance tab of the OEM driver.