

Description

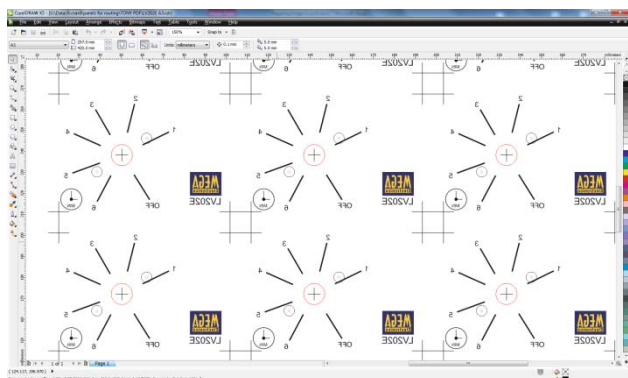
Quick-Mark Digital consists of a printable Laser Film, Base Sheets and optional Over-Laminating films. The Laser Film is heat stabilised and includes a UV inhibitor to protect against fading and has a double sided coating to accept Laser Toner. Vinyl Base Sheets are available in white, silver and transparent and there is 0.2mm aluminium available. All Base Sheets have a cross-linked acrylic adhesive on both sides. The self-adhesive optional clear Over-Laminating films are available as a clear or matt PVC vinyl and a Polycarbonate.

Quick-Mark Digital Laser Film

QMD Laser Film is a heat stabilised 100 micron base polyester film. This 140g/m² film produces high density images when used with a host of colour and mono laser printers. The film features UV inhibitors to prevent fading and a toner receptive coating on both sides of the base polyester. We have produced excellent results with a HP colour LaserJet CP5220 A3 printer was used with HP proprietary toner.

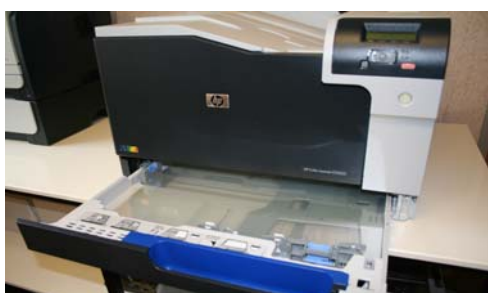
The Laser film is available as A4 or A3 and the Base Sheets in 10" x 12" or 12" x 20"

1. Preparing an Image to print.



Your image should always be mirrored (flipped or reversed) in your application software. By printing it this way round when the finish label/panel is produced the toner will always be under the polyester film, thus creating a self-laminating image. The toner will be protected as it will be sandwiched between the top layer of polyester and Base Sheet.

2. Loading QMD Laser Film



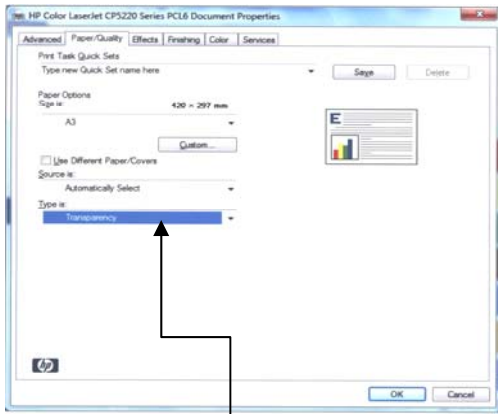
Load in main cassette



Load in bypass Tray

QMD Laser Film can be loaded in the main cassette or bypass tray of your colour Laser Printer. The film has a double sided coating so you do not need to worry which way up they are loaded. Be careful not to get fingerprints on the film; handle carefully at the edges or wear cotton gloves.

3. Printing



Set to Transparency



Reverse image printed

On the Properties of your print driver set to transparency or similar before sending your print job to the laser printer. Once again be careful not to get fingerprints on the film, even after printing.

4. Preparing to Laminate.



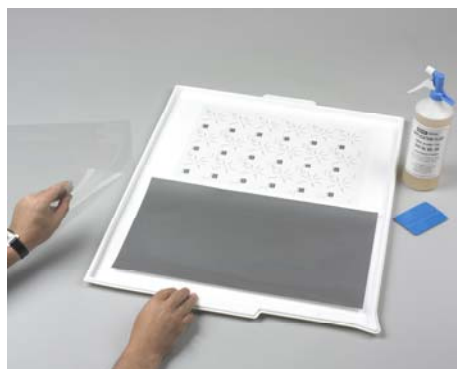
Preparing the laminate

Lay the printed film reverse way round (toner facing up) on a flat surface such as an 800-305 Quick-Mark Processing Tray. Then lay the Base Sheet of your choice, in this case 800-502 Silver, on the tray in front of the printed film. You will also need a 800-143 PA1 Applicator and 800-308 Application Fluid.

5. Remove the liner from the Base Sheet



Peel off liner from Base Sheet



Lay liner to one side

Remove the clear liner from the Base Sheet to reveal the adhesive. Lay the liner to one side as you will need it again in a moment.

6. Spray the Application Fluid



Spraying the application Fluid

Spray a fine mist of Application fluid over the adhesive of the Base Sheet.

7. Lay the Laser Film on the Base Sheet



Laying the Laser Film

Carefully pick up the QMD Laser Film at the edges and lay it on the Base Sheet. The Application Fluid you sprayed acts as a temporary barrier to the adhesive. This enables you to 'float' 'slide' 'position' and 'reposition' the Laser Film into place without any creases or air bubbles.

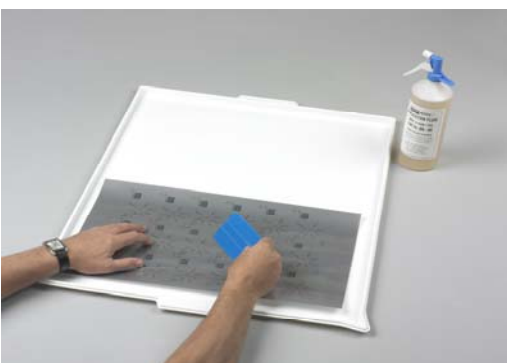
8. Replace the adhesive liner



Replacing the throw away liner

Without using any more Application Fluid, lay the 'throw away' clear adhesive liner on top of your panel / label.

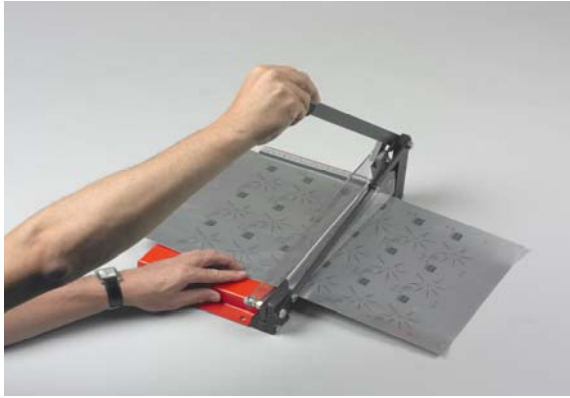
9. Squeegee away excess Application Fluid



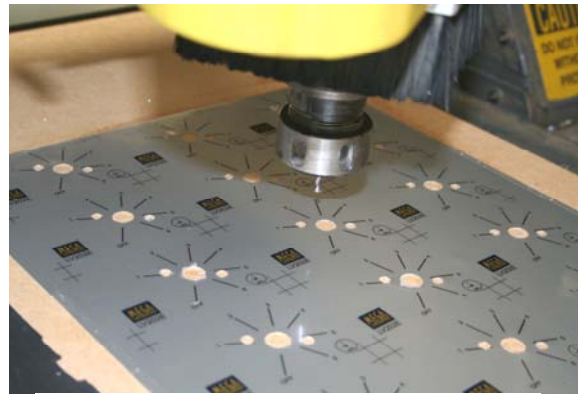
Squeegee excess Application fluid

With the clear adhesive liner protecting the Laser Film – squeegee with the PA1 Applicator from the middle out to remove any residual Application Fluid that remains between the two layers

10. Trim to Size



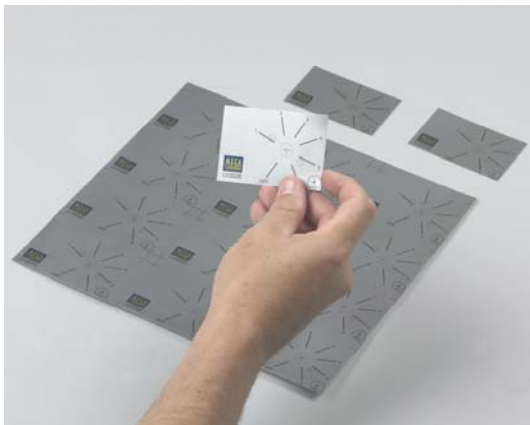
Trim to size



Routing

With the clear adhesive liner still in place, trim with a blade or scissors (plastic base) or a Mega Guillotine (plastic or aluminium base). You can also use a CNC Routing or cutting machine.

11. Finished Label / Panel



The finished label / panel

Finally remove the throw away liner from the top and your Quick-Mark Digital Panel is ready to remove the rear liner and adhere to its final location.

NOTES:

Excess Application fluid can sometimes leave smears in between the two layers of the label / panel, if it was not fully removed at Step 9 with the PA1 Applicator. This will normally disappear within 24 /48 hours.

If additional over-laminating is required, with one of our Gloss, Matt or Polycarbonate Films then these should be applied using application Fluid after Step 9. Remember to remove the throw away clear liner from the top before applying the Laminating Film.

If you have purchased 12" x 20" Base Sheets, these will include instructions for use with Quick-Mark Imaging Film. Those instructions are not relevant for use with QMD Quick-Mark Laser Film.



Mega Electronics Limited.

Mega House, Grip Industrial Estate, Linton, Cambridge, England. CB21 4XN

Tel: +44 (0) 1223 893900

email: sales@megauk.com

Fax: +44 (0) 1223 893894

web: www.megauk.com