

# How to mount an Aluminium Panel

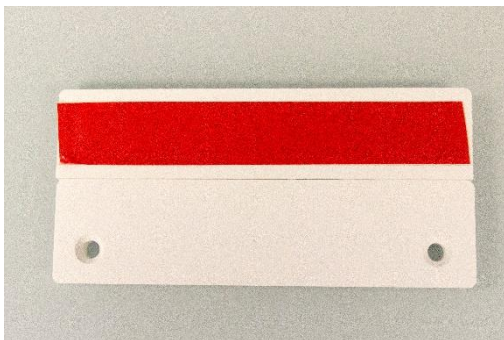


Using 71-3075 Aluminium Panel Interlock Mounts

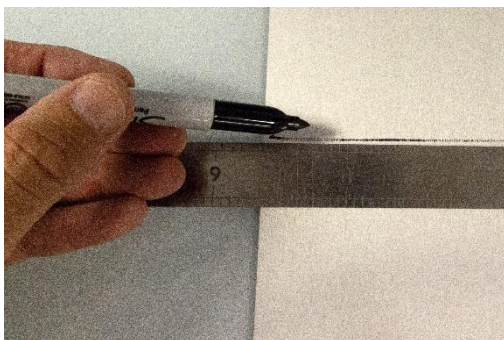
These two-part interlocking mounts are designed to make the mounting of any display panel quick and simple. They will hold the panel secure and enable the panel to be easily removed. Use one set for a small panel and two or more for a large panel.

One part has high grade VHB adhesive tape added to a recess. This is used to adhere the mount to the rear of the panel. The second part has two countersunk holes ideal for an M8 screw. Use the appropriate fixing for the wall you are mounting the panels to.

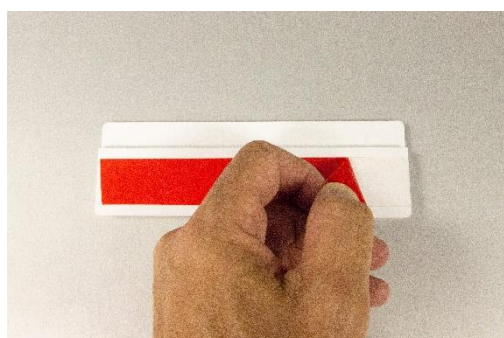
## How to use the Mounts



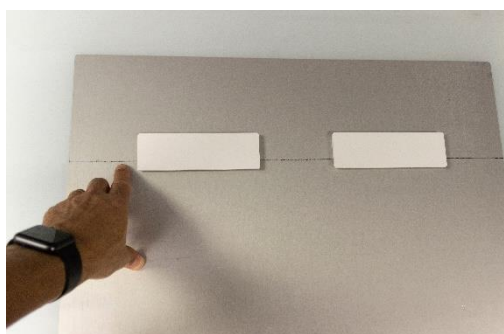
The mounts are designed to interlock as shown.



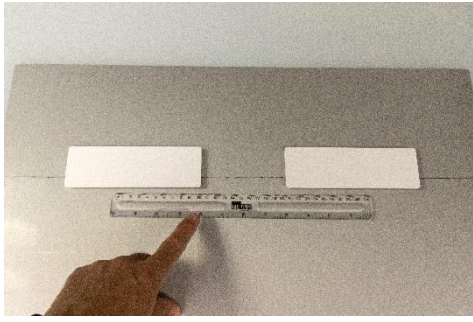
1. Draw a parallel line approximately two thirds up across the rear of the panel.



2. Remove the tape covering the adhesive.



3. Adhere the mounts as shown equidistance on the drawn line.



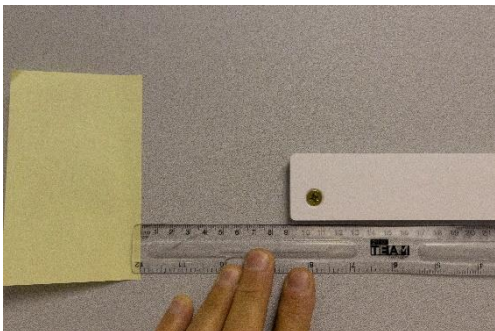
4. Measure the distance between the mounts.



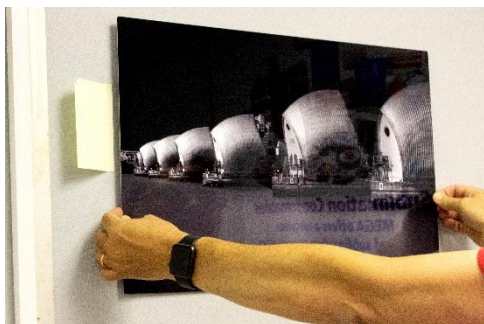
5. Draw a straight line on the wall and attach the other parts of the mount as shown. Make sure the distance between them is the same as the distance between the mounts on the panel.



6. Measure the distance from the mount and the edge of the panel (right side).



7. Stick a post it note on the wall next to the left hand mount at the distance you measure in 5).



8. Hang the panel aligning it with the post it note. The mounts will align perfectly.